

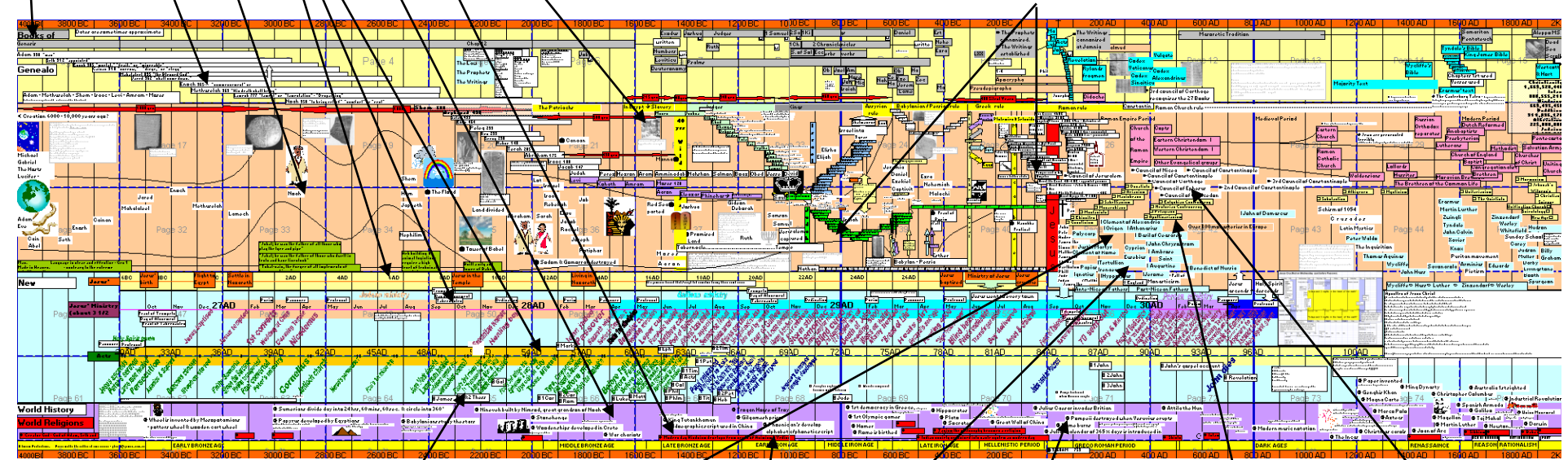
The Perspective Bible Timeline

Great for the Bible study leader, home school teacher, teacher, and for personal study.

This Perspective Timeline is primarily designed to be used in a lounge room Bible study - key people and events in large print. Graphics and more detail in smaller print for the leader taking the study and for later perusal of Bible study participants.

- 1 Books of Bible - period they cover; [W] denotes when they were written. (yellow section)
- 2 Genealogy - Adam to Christ. (The genealogy is stuck where ever I could fit it - straddling the yellow and the brown sections)
- 3 Bible History - Church History. (brown section)
- 4 New Testament History - 3 timelines on different scales are a blow-up of the NT period above them. (blue section)
- 5 World History - characters and events in contemporary history to aid overall historical perspective. (purple section)
- 6 World Religions - major world religions as they arise in history. (purple section)
- 7 Archeological finds placed at various points on the timeline. (purple section)

Left hand edge of a word sets it's position on the timeline.



Symbols :

- Book of Bible
- Religion
- Historical event
- Western Church
- Eastern Church
- Sects/Philosophies
- Church council

Dear Fellow Student,

Thank you for purchasing The Perspective Bible TimeLine.

It is a project that developed out of our Bible Study Group in 2004.

I was frustrated by not being able to show the things I was teaching in perspective and in relation to God's unfolding plan, other events and people through out the Bible and Church History.

This Bible/Church history timeline is not designed to be an academic masterpiece, while it does have much information, it as designed to show perspective.

The dates are debated by scholars and I do not state any date in a dogmatic way. It is simply meant to reflect the events and people somewhere close to the correct time period and in right relation to the events and people existing before and those who came after.

Please if you find something that is not consistent, let us know at 2inview@gmail.com

To provide the Perspective Bible TimeLine in a one piece printed version was too costly, so we decided just to supply it as a file that you can use, either as a software tool or print up your own on A3/A4 paper to the size or sizes that suited you.

The timeline can be printed up 500mm/2 feet long and be folded up to fit in your Bible cover pocket or full size at 3.6 metres/12 feet.

QUESTIONS.

1. What are the 2 wavy black lines that go throughout the brown band?

Umm, I really should have explained that ☹ The idea there, though unsuccessful, was to show a wandering journey of God's people and history.

2. Which of these are 'time sensitive' – meaning that the length of the bar coincides with the begin and end of that thing? I know that the genealogies are, for instance, and I think the books of the Bible are? But is anything else?

Yes you are right – the genealogy and the time period of Genesis.

But in most cases, it is only where a bar begins that places it in the right time.

3. England shows up about 300AD and there is a symbol of a cross next to it. What does that symbol signify? I 'think' that it symbolizes the reach of the gospel to that area?

Yes, that is correct.

4. What are the black round star things – such as is by ‘the Prophets Cannonised’ – 100BC at the top there. ?? There are also yellow ones too??

These are symbols by way of a legend as shown above.

The black stars are only used for the development of cannonisation and manuscripts, just to help group them together.

The yellow sun just highlights that it is a king.

5. Then there are symbols (like up and down arrows) by the rulers of Israel area – Some with up arrow, and some with down arrow. Are these pointing to which tribe they prophesied to or??

Yes, that is also correct.

6. What is “3760AM 753 AUC” listed at bottom about 10BC?

On the bottom left hand corner there is a table of explanation of various nations reckoning of dates.

7. To the right of ‘Alexander The Great’ there are 4 colored arrows. The gray one is empty – is that just extraneous then?

The kindom of Alexander divided into 4 by the army generals that took it, but I think at the time I had a lot of trouble to find the name of the fourth less important person.

VIEWING



You will require Microsoft Excel or Excel Viewer from :

<http://www.microsoft.com/downloads/details.aspx?FamilyID=c8378bf4-996c-4569-b547-75edbd03aaf0&displaylang=EN>

or OpenOffice - you can download OpenOffice FREE of charge from www.openoffice.org, just go to <http://www.openoffice.org/> and click on the green button :

TO PRINT

Because of its size, very few Printer Businesses will be able to print it up on one sheet of paper. If they have a color plotter large enough this will be possible. Though they should be able to print it in 2 pieces.

Usually architects will have a large plotter, if you know someone or offer to pay to have it done.

For me, I simply had it printed up on color A3/tabloid paper (about 45 pages) and put it together myself.

If you are going to print up the TimeLine in black & white, it is better to use the BIBLETIMELINE ON WHITE.XLS File – it will give you a much better and clearer copy.

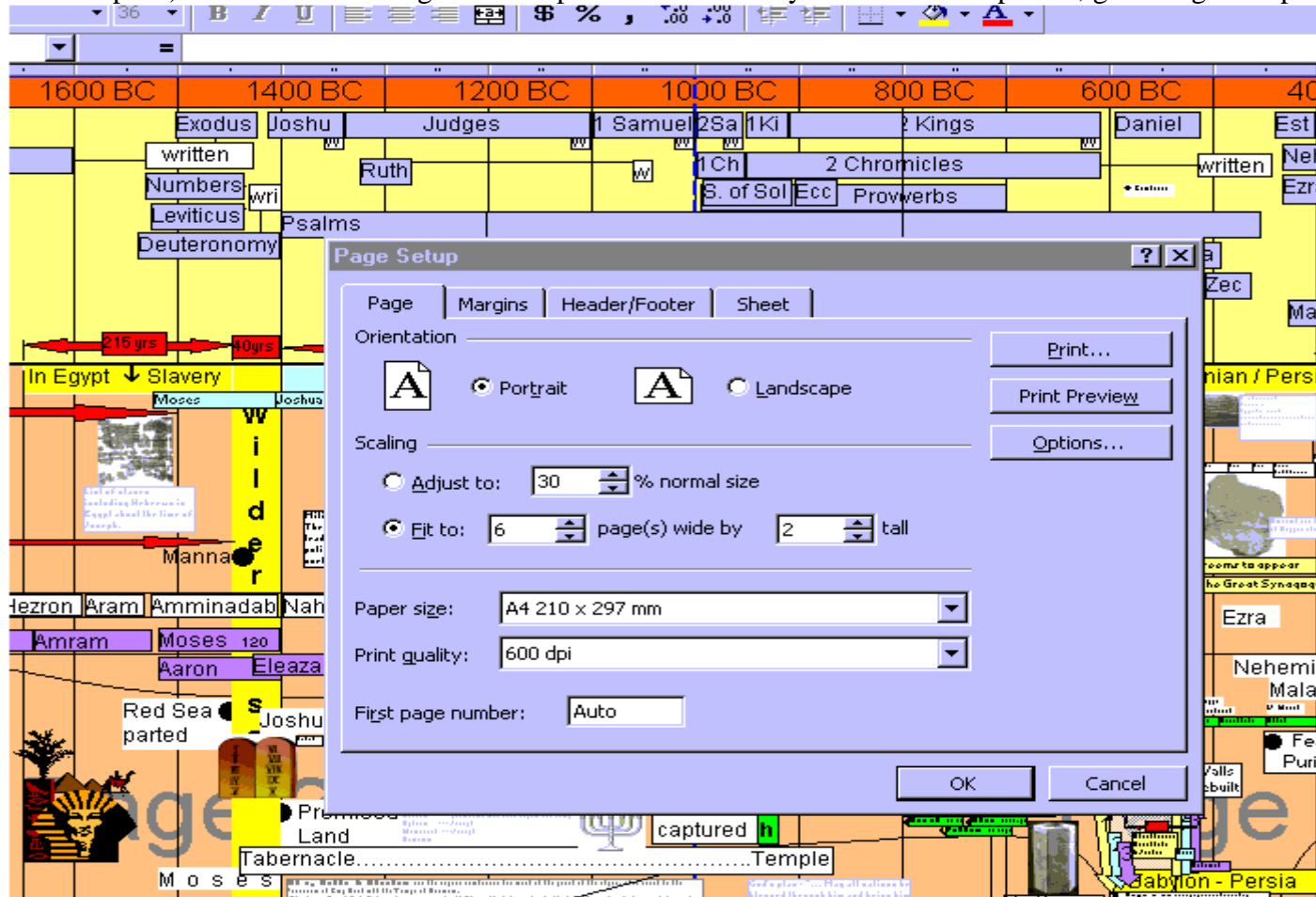
For those not-so-familiar with computers.

To print out on A4/legal or A3/tabloid, simply go to Excel File menu - Page Setup

Name	in × in	mm × mm	Ratio	Alias	Similar ISO A size
ANSI A	8½ × 11	216 × 279	1.2941	Letter	A4
ANSI B	17 × 11 11 × 17	432 × 279 279 × 432	1.5455	Ledger ^[3] Tabloid	A3
ANSI C	17 × 22	432 × 559	1.2941		A2
ANSI D	22 × 34	559 × 864	1.5455		A1
ANSI E	34 × 44	864 × 1118	1.2941		A0

and adjust the settings to suit your requirements. http://en.wikipedia.org/wiki/Paper_size#Loose_sizes

Say for-instance you wish to print out a good size timeline (approximately 1500 mm X 400mm; 5feet X 16 inches, at this size you can still read the small print) but still small enough to fold up and be carried in your Bible cover pocket, go to Page Setup and adjust as



follows :-

Those on white background, will give you a better picture when printed on black and white.

After printing the pages can be trimmed and joined together.

If you would like to have a 3.6 metre/12' version, you may find it helpful to do as I did.
I printed out the timeline in colour on A3/tabloid paper.



For a back board I used core flute plastic sheet, cutting 3 panels 1.2 metres X 1 metre
(approx. 4' X 3')

I then hinged the core flute sheets together end to end with gaffer tape creating a hinge (it is a good idea to lay the sheets on each other when you tape them together so that they will fold properly together as shown in diagram.)
I then had a tri-fold board that when folded up will store away easily and will even fit into the car when I need to take it with me.



I then trimmed the inside edges of each page and using double sided tape, affixed each page carefully onto the board.

We hope it is as useful to you as it is to us.

God bless you,

Neil Baulch

You may print out a hard copy of this timeline for each member of your Bible study group, in fact, we hope you do.

But permission is not granted to distribute the timeline files to anyone or The Perspective Bible TimeLine in any form commercially.

P.S. We also offer a money back guarantee – if you are not happy with the Perspective TimeLine, you can ask for your money back within 4 weeks.
All we ask is that you let us know clearly what you didn't like about it so that we can improve the TimeLine as best we can.